



# MARINE

*Aids To Navigation*

Ø600 - Ø2000mm  
Marine Navigation  
Buoy Range



[www.jfcmarine.com](http://www.jfcmarine.com)

# About JFC

JFC is a global organisation renowned for its innovative, quality plastic products. With over 30 years experience in the plastic moulding industry, JFC draws on the broad range of expertise within the organisation to innovate and develop products for international markets.

In 2005, JFC established a new marine focus with the development of a range of mussel float that now delivers mussel farmers the world over many advantages. From experience and product knowledge gained in serving the Aquaculture market we expanded our marine focus to provide a portfolio of Marine Aids to Navigation product solutions.

We now offer a complete range of polyethylene navigation buoys / lanterns, monitoring and control systems to suit all marine applications. These products are successfully being used to mark out shipping channels, port entrances, hazardous waters, wind farms, aquaculture sites and a variety of other marine installations. Our extensive portfolio includes Navigation Buoys, Navigation Solar Lanterns (Beacons), Marker Posts and topmarks.

An industrial member of IALA (Association of Marine Aids to Navigation and Lighthouse Authorities), JFC buoys and lanterns are manufactured in accordance with IALA guidelines. In addition we also supply a range of remote monitoring & control (GSM, AIS) and alarm systems used by mariners including coast guards and major port authorities worldwide.

# Why Us?

- We have over 30 years experience manufacturing high quality, functional and reliable products.
- We use pioneering technology and processes to produce products with superior strength and durability.
- Our products are manufactured from rotationally moulded UV stabilised virgin polyethylene designed especially for marine applications (UV15 rating).
- JFC marine products are tough, impact resistant and designed to withstand harsh marine conditions.
- Our products are designed in consultation with marine specialists to deliver superior functionality and reliability.
- We offer a range of accessories / complimentary products to support our products.

# Quality Assurance

JFC Marine is a member of IALA (Association of Marine Aids to Navigation and Lighthouse Authorities). JFC buoys and lanterns are manufactured in accordance with IALA guidelines.

Our products are quality approved to the internationally recognised ISO 9001: 2008 standard.



# NAV01 - Ø600mm Navigation Buoy

The NAV01 navigation buoy is used for shallow water installations ideal for marking safe water channels, temporary construction areas, aquaculture plots and racing marks. Manufactured from strong durable polyethylene, it is foam filled with internal ballast for additional strength and durability. Small and lightweight it has a pillar design with a high focal height of 1.5m. It is fitted with two lifting eyes for ease of manoeuvrability for installation or servicing purposes. It can also be customised with relevant topmarks and option of small self-contained lantern.

## Benefits

- Small and lightweight.
- Easy to handle.
- Rotationally moulded with marine grade (UV stabilised) virgin polyethylene.
- Reduced maintenance costs - servicing and storage.
- Buoy can be fitted with a range of navigation lights.
- All fixings are 316 grade stainless steel.
- Fitted with lifting eyes for ease of installation and maintenance.
- Each section can be coloured to suit IALA specifications, cardinal, danger marks etc.

PRODUCT CODE	NAV01
DIAMETER	600mm
FOCAL HEIGHT	1200mm (without topmark)
OVERALL HEIGHT	1500mm (without topmark)
WEIGHT	70kg
COLOURS	In accordance with IALA Maritime Buoyage System
LIFE EXPECTANCY	15 - 20 Years
WARRANTY	3 Years
LANTERN OPTIONS	M550, M660
ACCESSORY OPTIONS	Mould-on graphics, Topmarks





# NAV03 - Ø900mm Cone & Can Navigation Buoy

Small and lightweight these rotationally moulded Cone and Can shaped navigation buoys are a high visibility navigation solution with a focal height of 900mm. Completely foam filled they are fitted with two large lifting eyes and internal ballast with stainless steel mooring eyes for ease of installation and servicing. Designed for use with self-contained lanterns with the option of a topmark if required.

## Benefits

- Small and light weight high visibility solution.
- Easy to handle.
- Excellent buoyancy and stability.
- Fitted with high lifting eyes for ease of maintenance.
- All fixings are 316 grade stainless steel.
- Rotationally moulded with marine grade (UV stabilised) virgin polyethylene.
- Reduced maintenance costs - servicing and storage.
- Sits upright on deck or vessel for ease storage on site.
- Buoy can be fitted with a range of navigation lights.
- Product customisation such as warning signage application optional.

PRODUCT CODE	NAV03 (cone buoy) / NAV03 (can buoy)
DIAMETER	900mm
FOCAL HEIGHT	900mm (without topmark)
OVERALL HEIGHT	1300mm (without topmark)
WEIGHT	80kg (cone buoy) / 90kg (can buoy)
COLOURS	In accordance with IALA Maritime Buoyage System
LIFE EXPECTANCY	15 - 20 Years
WARRANTY	3 Years
LANTERN OPTIONS	M550, M650H, M660, M850 Series
ACCESSORY OPTIONS	Mould-on Graphics, Topmarks



# NAV02 - Ø1200mm Navigation Buoy

Ideal for inshore and sheltered areas the NAV02 navigation buoy is used for safe marking aquaculture sites, inner harbours, lakes or sheltered safe water channels.

Manufactured from strong durable polyethylene this buoy, has a pillar shaped body design with high focal height (2m) designed to suit self-contained lanterns. Foam filled with internal ballast and stainless steel mooring eye, it is fitted with 2 lifting eyes for ease of manoeuvrability for installation or servicing purposes.

## Benefits

- High visibility pillar design.
- Rotationally moulded with marine grade (UV stabilised) virgin polyethylene.
- Reduced maintenance costs - servicing and storage.
- All fixings are 316 grade stainless steel.
- Buoy can be fitted with a range of navigation lights.
- Fitted with lifting eyes for ease of installation and maintenance.
- Sits upright on deck or vessel for ease storage on site.
- Product customisation such as warning signage application optional.

PRODUCT CODE	NAV02
DIAMETER	1200mm
FOCAL HEIGHT	1800mm without topmark - 2100mm with topmark
OVERALL HEIGHT	2500mm without topmark - 2800mm with topmark
WEIGHT	300kg
COLOURS	In accordance with IALA Maritime Buoyage System
LIFE EXPECTANCY	15 - 20 Years
WARRANTY	3 Years
LANTERN OPTIONS	M550, M650H, M660, M850 & M860 Series
ACCESSORY OPTIONS	Mould-on Graphics, Radar Reflectors



# NAV04 - Ø2000mm Navigation Buoy

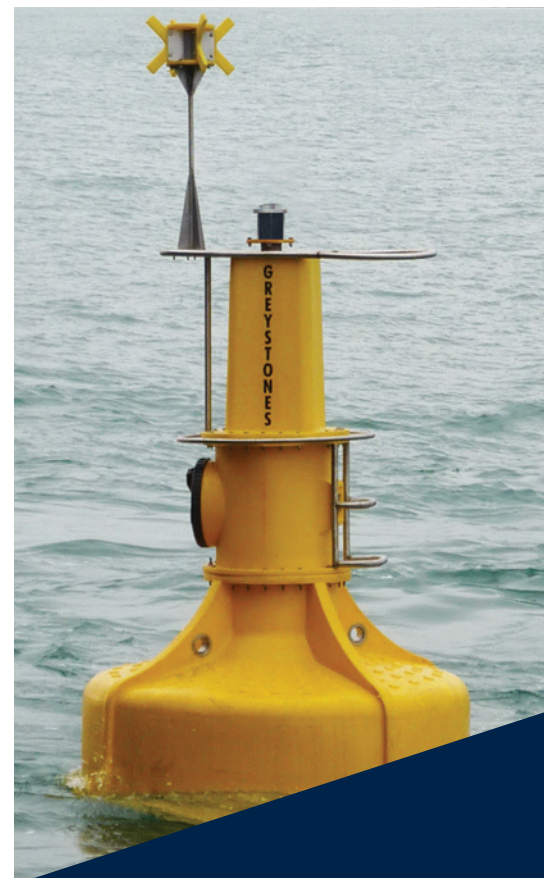
This modular design navigation buoy is designed for use in open seas, or exposed channels and harbours. It is made up of 3 individual sections, the Hull, Middle Section (containing Battery Box) and Lantern Tower.

Manufactured from rotationally moulded UV stabilised virgin polyethylene it is fitted with 2 stainless steel lifting eyes connected to 2 mooring eyes for additional strength when installing or servicing the buoy. It is designed to be complete with solar panels / lantern or self-contained lantern. Optional AIS or GSM also available.

## Benefits

- Large visual impact.
- Reduced maintenance costs - servicing and storage.
- All fixings are 316 grade stainless steel.
- Rotationally moulded with marine grade (UV stabilised) virgin polyethylene.
- Buoy can be fitted with a range of navigation lights.
- Fitted with lifting eyes for ease of installation and maintenance.
- Product customisation such as warning signage application optional.

PRODUCT CODE	NAV04
DIAMETER	2000mm
FOCAL HEIGHT	3000mm
OVERALL HEIGHT	4000mm
WEIGHT	770kg
COLOURS	In accordance with IALA Maritime Buoyage System
LIFE EXPECTANCY	15 - 20 Years
WARRANTY	3 Years
LANTERN OPTIONS	M550, M650H, M660, M850, M860 Series Stand alone options also available.
ACCESSORY OPTIONS	Mould-on Graphics, AIS, Solar Panels, Radar Reflectors

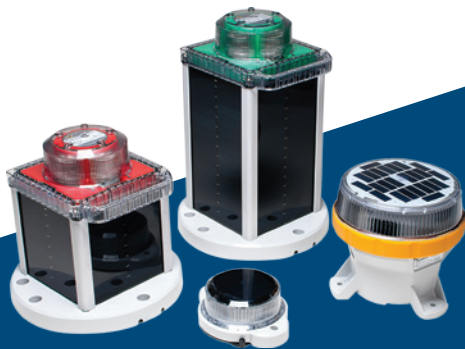




# Marine Lanterns

JFC supply a range of Navigation Lanterns which have proven to be reliable, long-lasting and a cost effective means to increase nautical safety. Our AtoN navigation solar lanterns are currently in use as marine navigation aids configured for various nautical marking applications ranging from large industrial ports and commercial marinas to small lakeside docks and private waterfronts.

They are being used for very wide variety of applications including oil and gas, port and harbour authorities, waterways and lakes, aquaculture and recreation applications.



## Self-Contained Lanterns

Single light solutions are becoming increasingly popular with the constant development of LEDs, solar panels and battery technologies. For the operator an integrated light and solar power supply lantern is ideal. Easy to handle, there is no engineering on installation work required.

Range of Self-Contained Lanterns available from 1 - 10nm.



## LED Sector Lanterns

JFC supply a range of omni-directional LED Sector lights for the marine aids to navigation industry. Compact in design with accurate sector borders, they are equipped with a replaceable LED optical unit.

Range of LED Sector Lanterns available from 6 - 10nm (depending on colour and flash character).

We can quickly and cost effectively supply and deliver custom marine navigation lighting and nautical hazard marking solutions. All lanterns / lights are available in a range of high visibility colours in accordance with IALA Maritime Buoyage System. Manufactured specifically for the harshest of marine environments and conditions they have been tried and tested in the most extreme maritime locations.



## LED Marine Lanterns

JFC supply a range of LED lanterns for the marine aids to navigation industry. They are appreciated for their luminous performance, reliability, modularity and functionality. Customers have the ability to choose features suited to their specific needs so they can operate their aids to navigation efficiently and at a lower life time cost.

Range of LED Marine Lanterns available from 1 - 15nm.



## Range LED Marine Lanterns

JFC Marine offer a selection of short, medium and long range directional lights ideal for use as port entry or lock traffic signals, or other applications where a night-time or daytime visible range light is required. Designed for durability in harsh marine environments they are supplied with a selection of programming and control options.

Range of Range LED Marine Lanterns available up to 15nm.



# MARINE

*Aids To Navigation*



JFC Marine Head Office  
JFC Manufacturing Co. Ltd.  
Weir Road, Tuam, Co. Galway, Ireland

Tel. +353 93 24066  
Email. [info@jfcmarine.com](mailto:info@jfcmarine.com)

**[www.jfcmarine.com](http://www.jfcmarine.com)**

Disclaimer: It is believed that the information given in this publication is correct. The products marketed by the company are however, subject to continuous development and the company therefore reserves the right to alter information without notice.

© Copyright JFC November 2016 Rev.01